

2 - 9

Area of Irregular Shapes

Review All Areas

square: $l \cdot w$

rectangle: $l \cdot w$

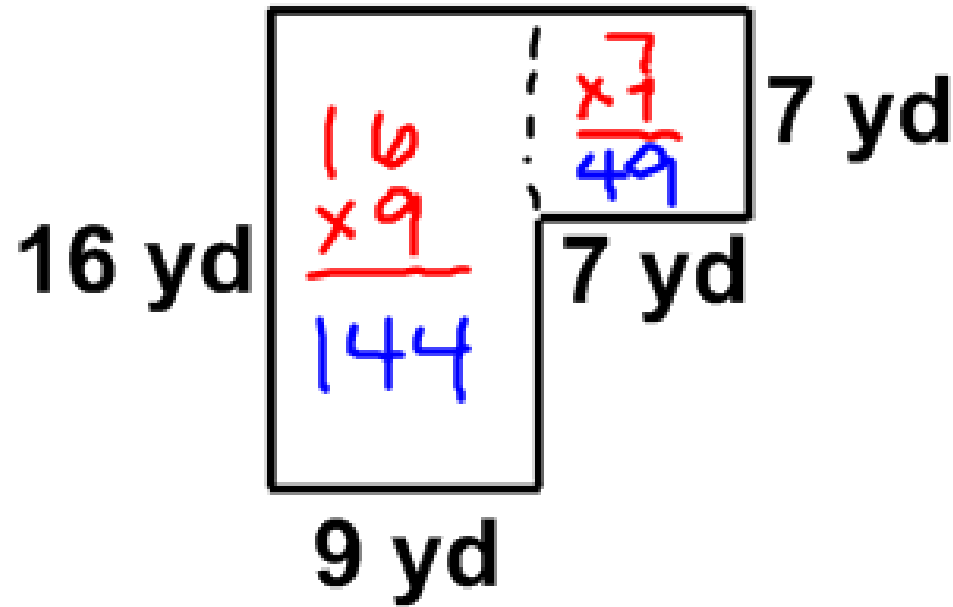
triangle: $\frac{1}{2} b \cdot h$ or $\frac{bh}{2}$

parallelogram: $b \cdot h$

circle: πr^2



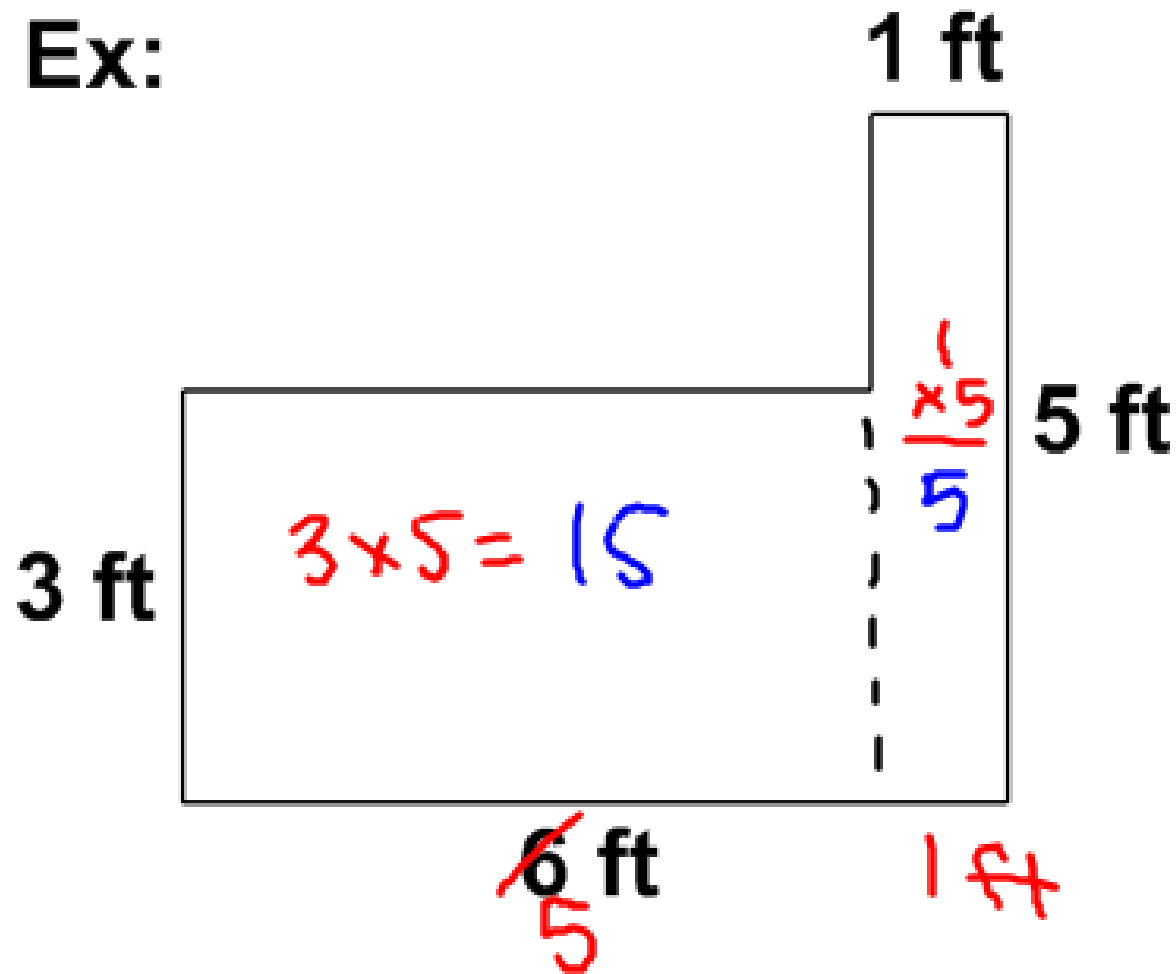
Ex:



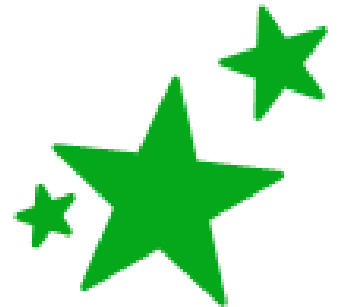
$$144 + 49 = 193 \text{ yd}^2$$



Ex:



$$15 + 5 = 20 \text{ ft}^2$$



Ex:

1.5 cm

9 cm

$$\begin{array}{r} 9 \\ \times 1.5 \\ \hline 13.5 \end{array}$$

26.5 cm²

$$2 \times 6.5 = 13$$

2 cm

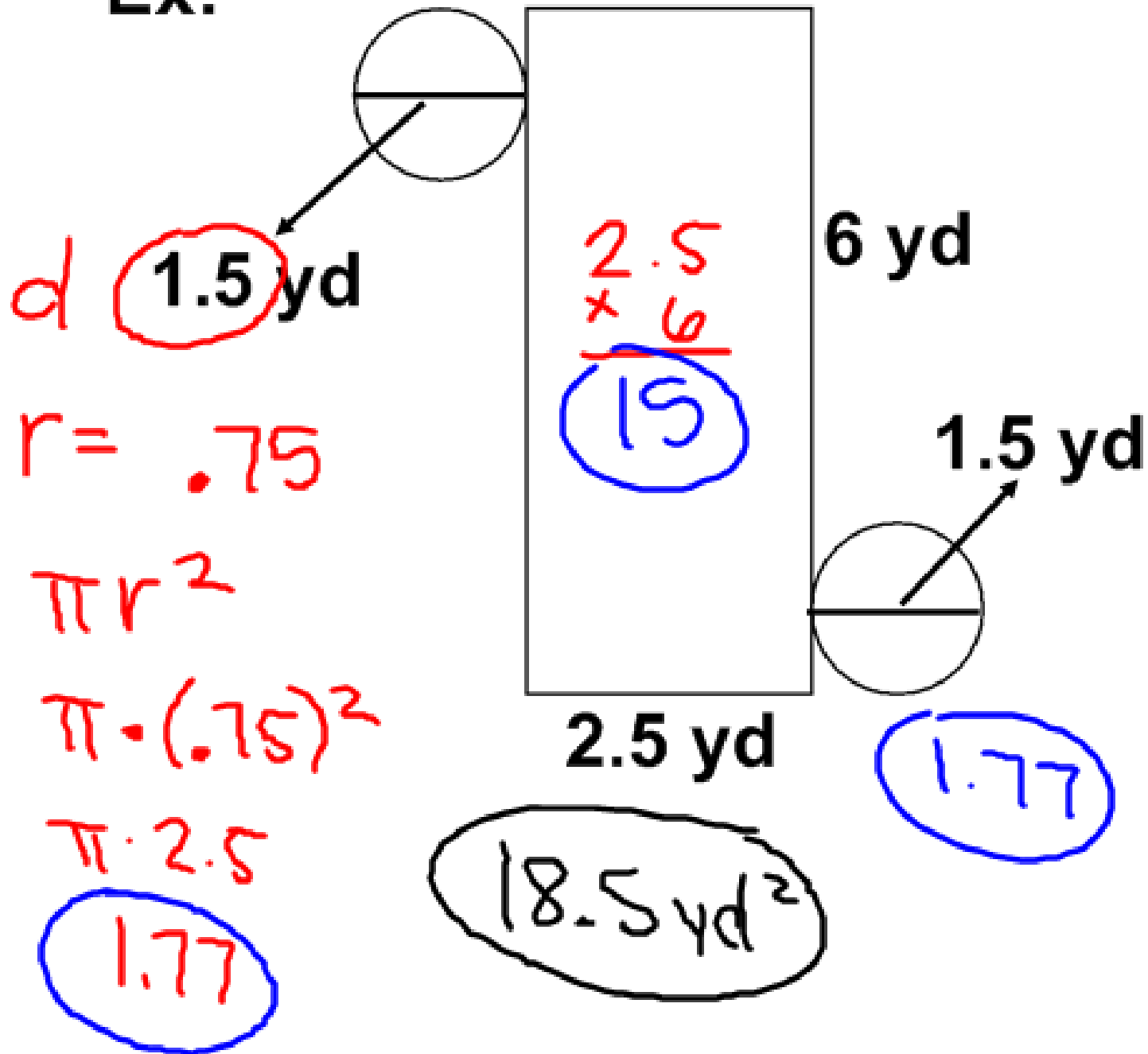
1.5

~~8 cm~~

6.5



Ex:



Homework:

2 - 9 WS

